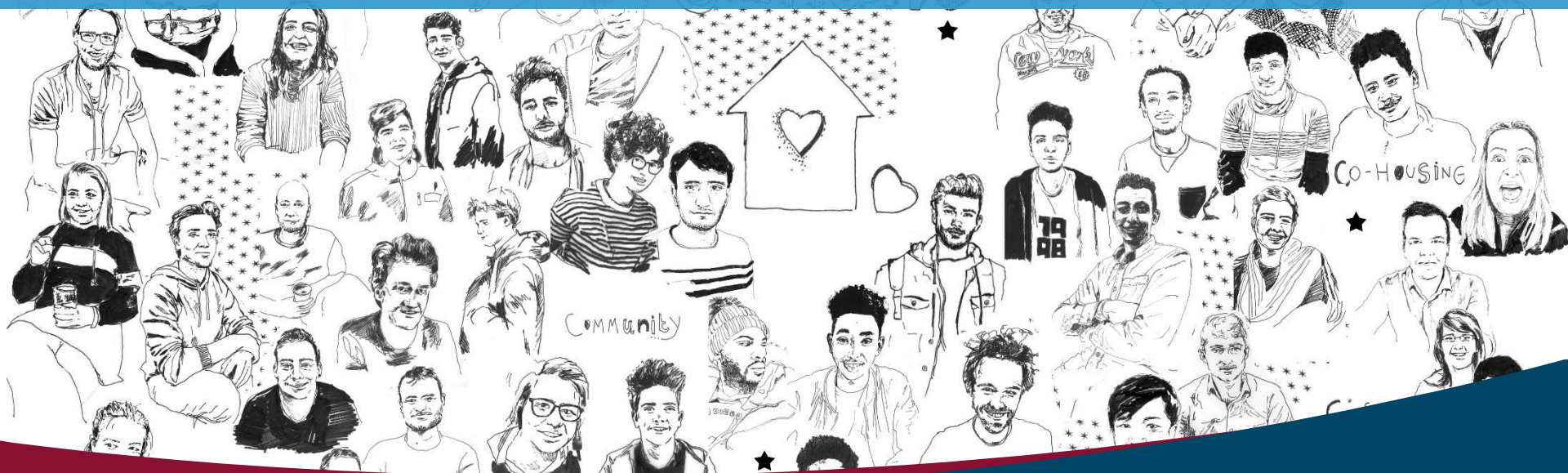




EVALUATION OF CURANT



Rilke Mahieu & Laura Van Raemdonck – Centre for Migration
and Intercultural Studies (CeMIS) & Noel Clycq (Edubron)

GOAL

To support the social and structural integration of young unaccompanied refugees in Belgium



MAIN STRATEGIES

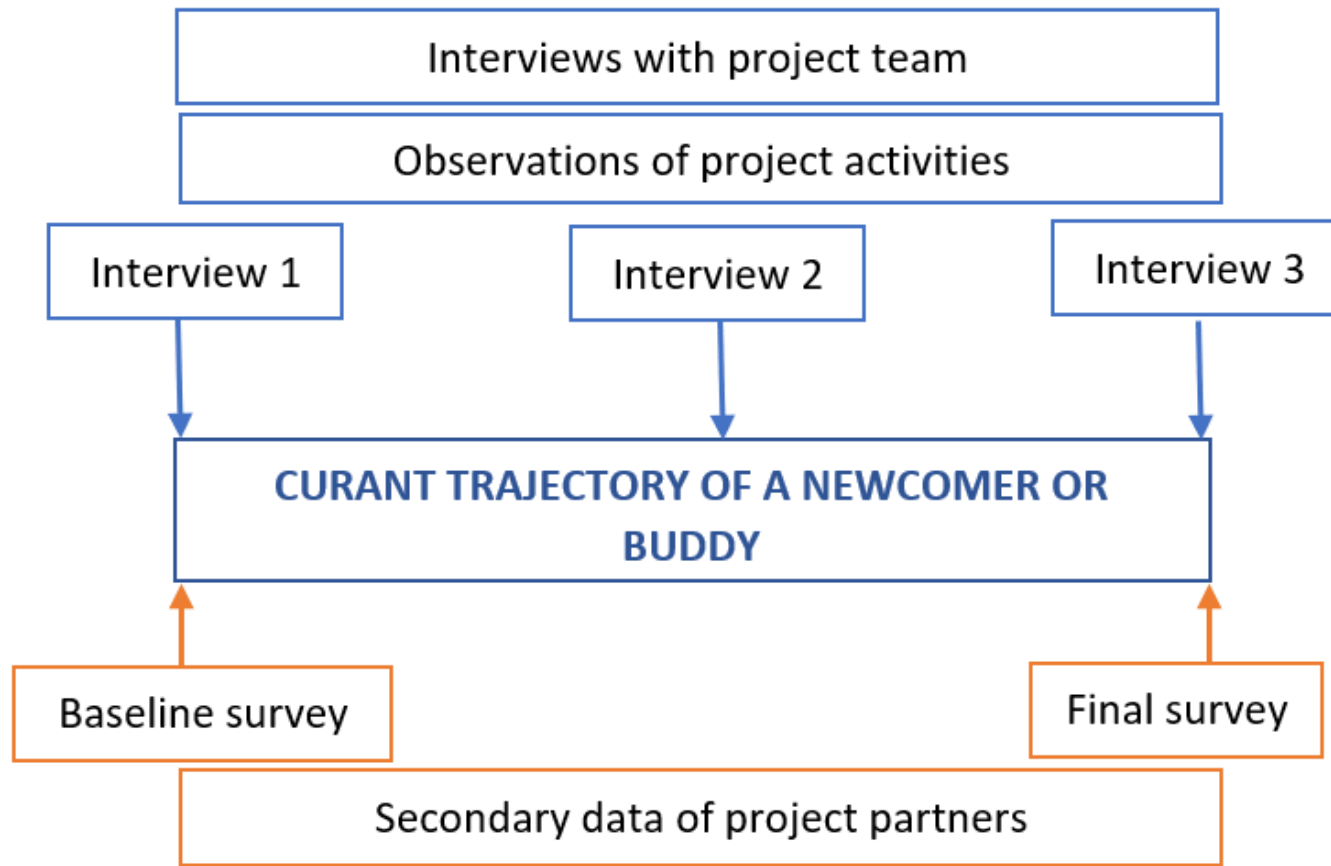
A. Communal Living

Strengths & Challenges

B. Case Management

Strengths & Challenges

HOW? Mixed-method, longitudinal evaluation approach

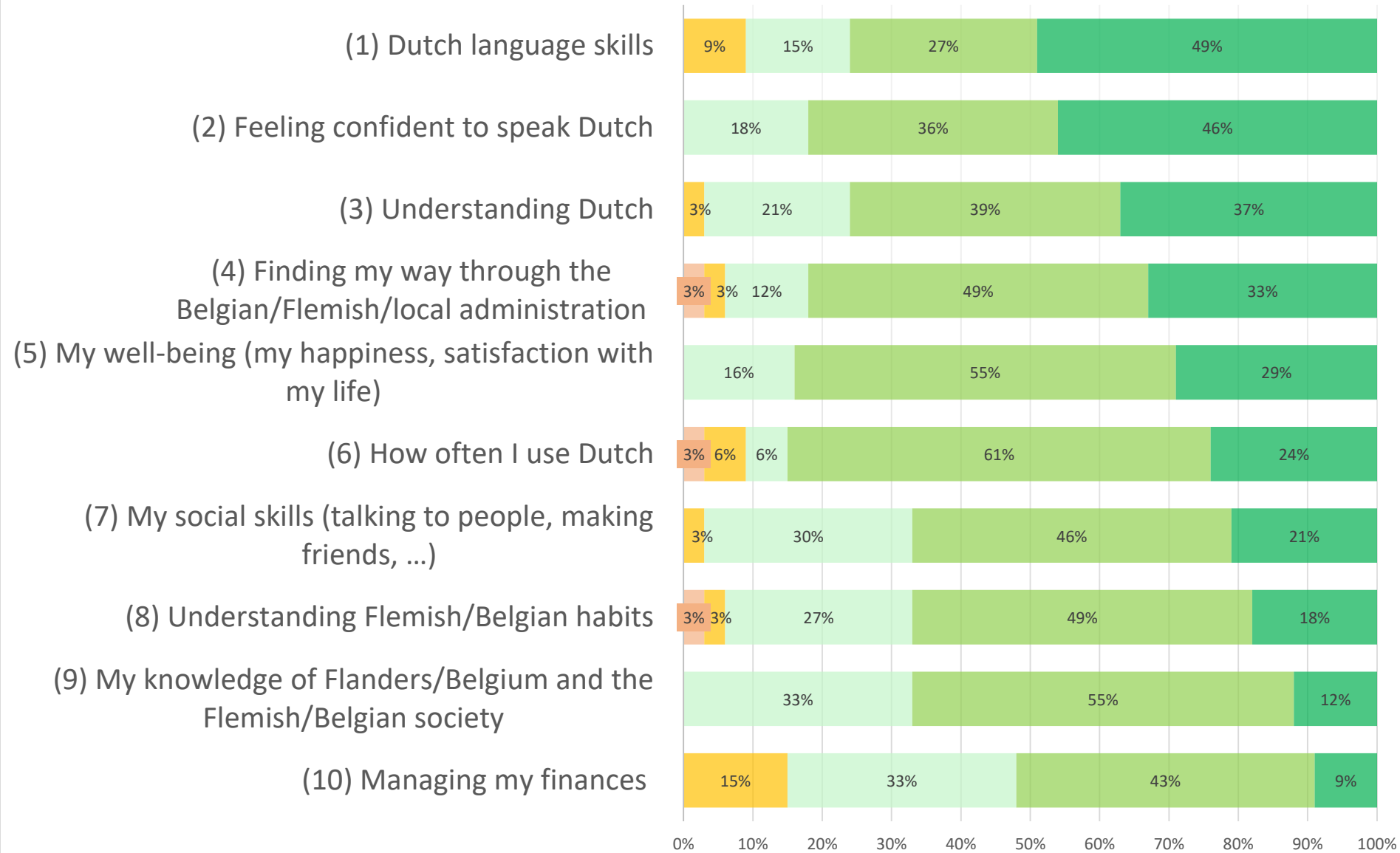


Has CURANT supported young unaccompanied newcomers' social and structural integration in Belgian society?

If so, how did this happen?



Newcomers' self-evaluation



A. Communal Living

MAIN STRENGTHS (1): Almost permanent **availability** of various types of **informal support to newcomers**

*“What I used to do [before], when I did not understand something: I took a picture of it, and showed it to my teacher or social worker when I saw her. **But the people here [in this house], they support you on the spot... I can go downstairs if I have a question or so, it is perfect.**”*
(Syrian newcomer)



© Ine Haine

A. Communal Living

MAIN STRENGTHS (2):

A stimulating environment
for **mutual informal learning**



© Ine Haine

EVERYDAY PRACTICES *Learning to recycle, to fix something small, to get around in the city, ...*

LANGUAGE LEARNING *Practicing Dutch language in a safe environment*

CULTURAL EMPATHY *Getting to know about one another's lives, backgrounds and cultures*

Newcomers: Dutch language competencies

*“My Dutch is quite better than before, because before I lived alone. Now I live with other people. **Now I feel more confident to ask questions.** For example, when we’re watching TV together, then I’m not afraid to ask what the programme is about, or what the meaning of this word is.”*
(Iraqi newcomer)



© Ine Haine

More than 3 out of 4 newcomers say that their Dutch language skills, confidence to speak Dutch and understanding of Dutch have improved significantly due to CURANT

Buddies: intercultural competencies

*“It is almost impossible to not learn a lot after living together with people from a completely different culture. **My way of discussing sensitive topics with people that have another opinion and frame of reference has changed a lot.**” (male buddy living together with different newcomers).*

Almost all buddies indicate that their knowledge about the cultures and habits of refugees has expanded.

A. Communal Living

MAIN CHALLENGES

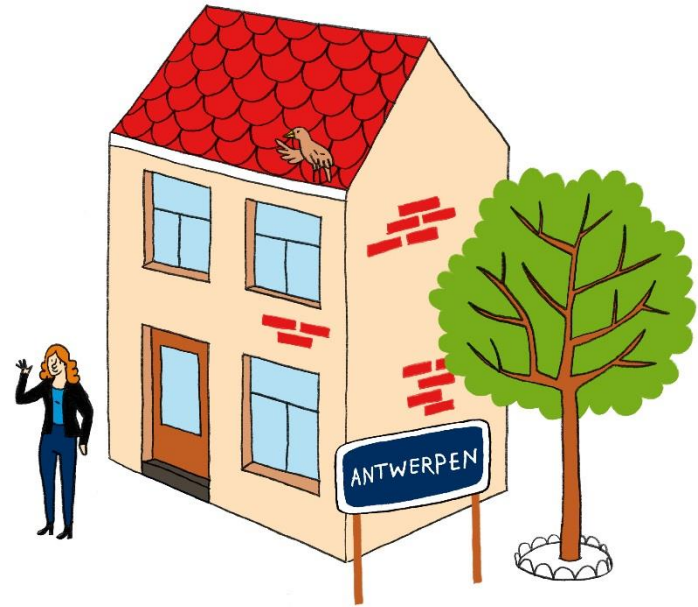
- For almost 1 out of 5 matched newcomer-buddy duos, communal living did not work out well
- In many houses, social contact between newcomers and their buddies remained rather superficial
- The sustainability of buddy-refugee relationships is uncertain

39% of the newcomers and **61%** of the buddies indicate they do not know if they will keep in contact after CURANT.

Evaluation outcome: explanations for variety

Amount, depth and nature of daily social contact among housemates varies due to following reasons:

- diverging motivations and conflicting expectations
- busy daily schedules
- language barriers
- type of accommodation
- gender, SES



© Ine Haine

B. CURANT's Case Management

MAIN STRENGTHS

- Multi-disciplinary cooperation → quality of guidance
- A low number of individual cases per case manager → accessibility, quality, and flexibility of professional care and support



B. CURANT's Case Management

MAIN CHALLENGES

- Too ambitious
- Information sharing
- Position of case manager
- More care vs. more control

Main evaluation outcomes

CURANT's approach,
offering

- housing
- professional and informal support
- learning opportunities

**contributes to young
unaccompanied
newcomers' inclusion in
society.**



© Ine Haine

Main evaluation outcomes



- Not a one-size-fits-all solution
- Intensive, temporary care vs. long-term needs
- Individual versus structural problems

Thanks for your attention!

Rilke.Mahieu@uantwerpen.be

Laura.Vanraemdonck@uantwerpen.be

Noel.Clycq@uantwerpen.be

<https://www.uantwerpen.be/en/research-groups/cemis/projects-and-publications/specific-project-sites/>

<https://uia-initiative.eu/en/uia-cities/antwerp>